



Imagine Lithium Reports High Grade Li_2O in Grab Samples Taken from Newly Identified 3 km Trend of Lithium-Bearing Pegmatites at Jackpot

September 7, 2022, Vancouver, BC, Canada – IMAGINE LITHIUM INC. (the “Company” or “Imagine”) (ILI-TSX:V) (OTCQB:ARXRF) is pleased to announce assay results from its ongoing prospecting program on the Jackpot lithium property located in the Georgia Lake Area about 140 km NNE of Thunder Bay, Ontario. Based on the summer prospecting program, Imagine Lithium has identified a 3 km trend of sub-parallel spodumene-bearing pegmatite dikes that extends to the east and west of the Jackpot main drilling area. See **Figure 1** which outlines the approximately 18,800-hectare Jackpot Lithium property and trend. Today’s assay results from 57 granitic pegmatite samples collected from the south-west of Jackpot are displayed in **Figure 2 and Table 1** and contain multiple high grade Li_2O grab samples. Grab samples were also taken from dikes in the north-eastern portion of this 3 km trend and assay results are pending. **Figure 3** indicates the location of spodumene-bearing pegmatites that have been identified elsewhere on the property.

J.C. St-Amour, President of Imagine commented, “Our summer prospecting program has been a complete success with multiple new lithium-bearing dikes being identified on just a small portion of this vast property. Our geologist did not venture far from our main Jackpot zone to identify and sample new lithium-bearing dikes. Given our prospecting success in the immediate vicinity of our drilling area I am very encouraged about the potential for this property to host many additional dikes. In the meantime, this 3 km trend will be the focus of our next fall/winter drill program.”

St-Amour continued, “One of the best features of this project is its location and proximity to infrastructure, being a short drive from the major port of Thunder Bay. Below is a link to a short video of the property which shows several outcrop dikes as well as the project’s proximity to infrastructure, which is key to the economics of any mining operation in the future.”

Link to Jackpot Video

<https://youtu.be/1MayChmGy5g>

Figure 1: Jackpot Lithium project and 3 km Lithium Pegmatite trend.

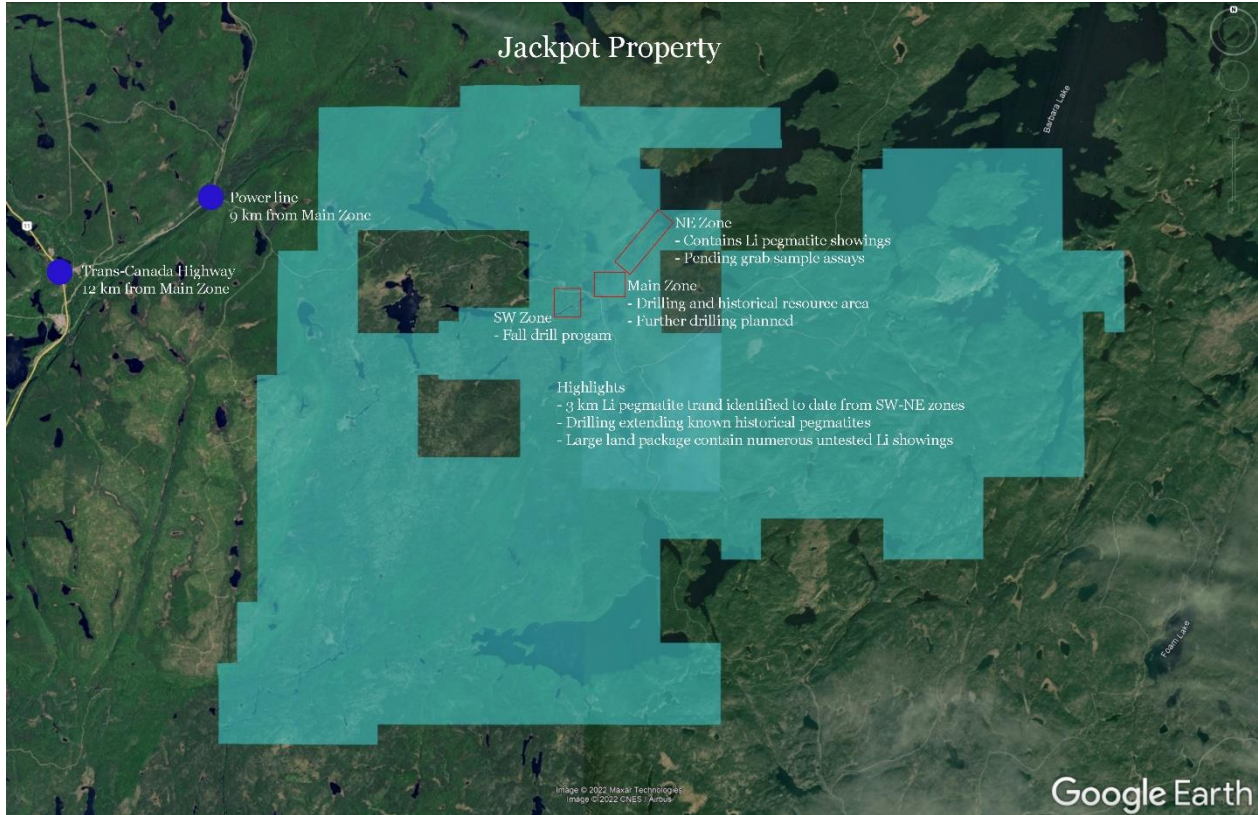


Figure 2: Map Identifying Grab Sample Assay Results to the SW of the Jackpot Main Zone.

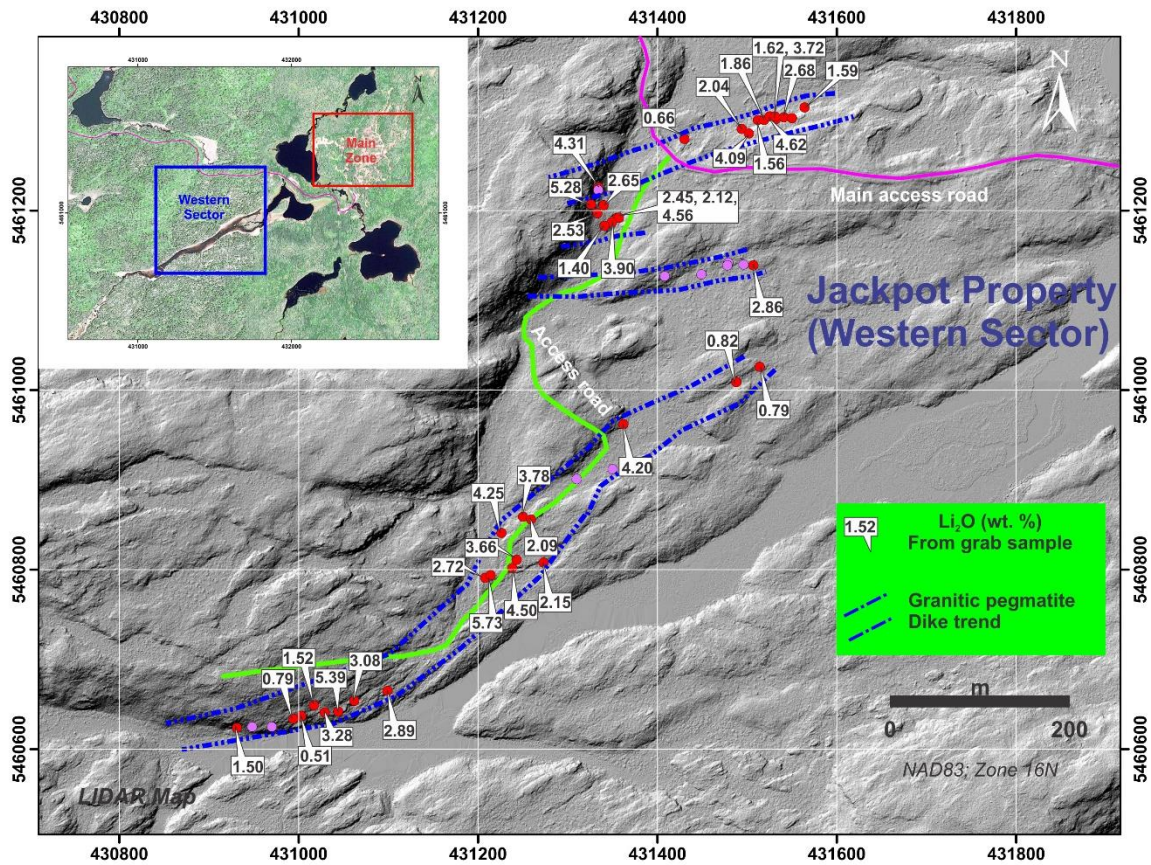


Figure 3: Map Identifying Pegmatite Locations.

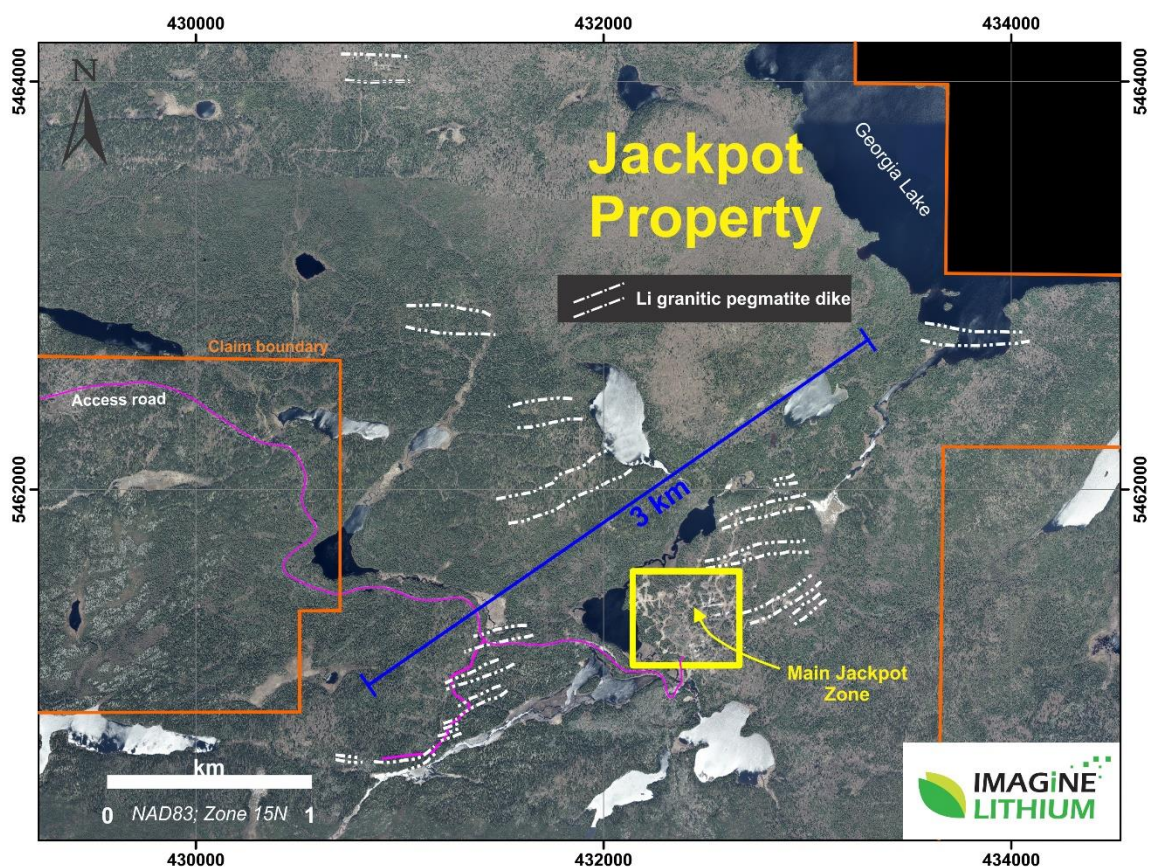


Table 1: Significant Grab Sample Assay results

Sample_no*	Easting	Northing#	Li (wt. %)	Li ₂ O (wt. %)
781984	431272	5462688	0.18	0.39
781907	431430	5461280	0.31	0.66
781924	430994	5460634	0.37	0.79
781923	431003	5460637	0.51	1.10
781985	431282	5462751	0.60	1.29
781937	431564	5461315	0.74	1.59
781934	431531	5461305	0.75	1.62
781991	431514	5461026	0.79	1.70
781990	431488	5461009	0.82	1.75
781915	431259	5460856	0.97	2.09
781912	431273	5460808	1.00	2.15

781992	431355	5461192	1.14	2.45
781997	431333	5461197	1.17	2.53
781996	431340	5461206	1.23	2.65
781935	431541	5461304	1.25	2.68
781918	431099	5460665	1.34	2.89
781982	431635	5461912	1.37	2.95
781995	431341	5461183	1.40	3.02
781919	431062	5460654	1.43	3.08
781927	430931	5460624	1.50	3.23
781921	431029	5460641	1.52	3.28
781922	431017	5460649	1.52	3.27
781930	431512	5461301	1.56	3.36
781911	431243	5460811	1.70	3.66
781933	431532	5461302	1.73	3.72
781914	431250	5460859	1.76	3.79
781994	431349	5461187	1.81	3.90
781931	431519	5461301	1.86	4.00
781929	431502	5461286	1.90	4.09
781917	431362	5460962	1.95	4.20
781913	431226	5460841	1.97	4.25
781999	431334	5461226	2.00	4.31
781928	431494	5461291	2.04	4.39
781910	431238	5460802	2.09	4.50
781936	431550	5461303	2.09	4.50
781993	431357	5461192	2.12	4.56
781932	431525	5461305	2.15	4.62
781998	431326	5461207	2.45	5.28
781920	431044	5460642	2.51	5.39
781909	431214	5460794	2.66	5.73
781908	431208	5460791	2.72	5.86
781938	431507	5461139	2.86	6.15
#NAD83; Zone 15N				

* Samples from granitic pegmatite dikes display variable texture and mineral size that can alter the true Li content of the lithology. The analyzed Li concentrations may not necessarily represent the value of the pegmatite dike.

About Jackpot

The Jackpot Lithium property, located in the Georgia Lake Area about 140 km NNE of Thunder Bay, Ontario, is approximately 12 km by air from the TransCanada Highway (Hwy 11) and the main railroad which connects to the port town of Nipigon, on Lake Superior. The property contains known lithium bearing granitic pegmatite dikes, of which two provided estimated historical resources of 2 million tons at 1.09% Li₂O and 750,000 tons at 1.38% Li₂O*.

Qualified Person

The technical content of this news release was approved by Michel Boily, PhD, P.Geo, an Independent Qualified Person as defined by the National Instrument 43-101.

** The estimates presented above are treated as historic information and have not been verified or relied upon for economic evaluation by the Company. These historical mineral resources do not refer to any category of sections 1.2 and 1.3 of NI-43-101 such as mineral resources or mineral reserves as stated in the 2010 CIM Definition Standards on Mineral Resources and Mineral Reserves. The explanation lies in the inability by the Company to verify the data acquired by the various historical drilling campaigns. The Company has not done sufficient work yet to classify the historical estimates as current mineral resources or mineral reserves.*

About Imagine Lithium Inc.

Imagine Lithium is a junior mining exploration company focused on seeking and acquiring world-class mineral projects. The company holds the Jackpot lithium property located near Nipigon, Ont., which contains known pegmatite showings including two historical resources of 2 million tons grading 1.09% Li₂O and 750,000 tons at 1.38% Li₂O.

ON BEHALF OF THE BOARD

“J.C. St-Amour”

J.C. St-Amour, President

FOR FURTHER INFORMATION, PLEASE CONTACT:

Telephone: +1-604-683-3995

Toll Free: 1-888-945-4770

 +1 604-683 3995

 +1 604-683-3988

 info@infiniteore.com

 infiniteore.com

Neither the TSX Venture Exchange nor its Regulation Services Provider (as that term is defined in the policies of the TSX Venture Exchange) accepts responsibility for the adequacy or accuracy of this release.

FORWARD LOOKING STATEMENTS: This news release contains forward-looking statements, which relate to future events or future performance and reflect management's current expectations and assumptions. Such forward-looking statements reflect management's current beliefs and are based on assumptions made by and information currently available to the Company. Investors are cautioned that these forward-looking statements are neither promises nor guarantees and are subject to risks and uncertainties that may cause future results to differ materially from those expected. These forward -looking statements are made as of the date hereof and, except as required under applicable securities legislation, the Company does not assume any obligation to update or revise them to reflect new events or circumstances. All the forward-looking statements made in this press release are qualified by these cautionary statements and by those made in our filings with SEDAR in Canada (available at WWW.SEDAR.COM).

 +1 604-683 3995

 +1 604-683-3988

 info@infiniteore.com

 infiniteore.com